

# How-to – Sorting Hat - Find A Dentist US

V1.0 - Global Marketing Technology-AEM

**Component Name: Find A Dentist - US**

---

**Author:** Christopher Restino

**Creation Date:** 10-07-2019

**Last Updated:** 10-10-2019

**Version:** [\[1.0\]](#)

# 1 Document History

The following important changes have been made to this document:

Date	Version #	Description of Changes Made	Author	Approved By
October 10 - 2019	1.0	Initial Draft	Christopher Restino	

## Table of Contents

### Contents

<b>1</b>	<b>DOCUMENT HISTORY .....</b>	<b>2</b>
<b>2</b>	<b>INTRODUCTION.....</b>	<b>4</b>
2.1	SHORT DESCRIPTION.....	4
2.2	AEM COMPONENT DATA MODEL.....	5
2.3	INTENDED AUDIENCE .....	5
<b>3</b>	<b>HOW TO ENABLE/TURN-ON THE COMPONENT.....</b>	<b>6</b>
<b>4</b>	<b>COMPONENT DIALOG.....</b>	<b>7</b>

## 2 Introduction

This document provides “How to Instructions” for the component “Find a Dentist – US on the Anticipatory Pathing Tool (Sorting Hat)”. This component is intended to be used in all Evolution pages, including:

- Home page
- Solution Category page
- Solution Detail page

### 2.1 Short Description

This is intended to path users to the correct destination, or complete certain tasks in line. This is a Drag and Drop component available in the AEM Side-kick. This component includes Choose a Network screen and Find a Dentist - US screen.

#### Feature Overview

**Find a Dentist** – CTA on the Sorting Hat container to navigate to the Find a Dentist – US flow

**Choose a Network screen** – option to choose Insurance provider

Following rules are enforced:

- Min items on Choose a Network screen – 2
- Max items on Choose a Network screen – 8

#### Desktop/Tablet

- when more than 6 include a Text link to show more choices

#### Mobile

- when more than 4 include a Text link to show more choices

**Find a Dentist screen** – includes CTA to navigate to Find a Dentist - US results screen

**Don't Know your Network link** – option to navigate to Don't Know your Network overlay

**Back Button** – option to navigate to the previous screen (available starting on the Second screen on the flow)

## 2.2 AEM Component Data Model

Tab	Field Name	Field Group	Field Type	Validation	Accepted values
Configuration	Sorting Hat Menu Item - Config				
	Title	Configuration	Text Field	Mandatory Max Char. 45	Alphanumeric
	Icon	Configuration	Drop Down	Mandatory	List of Tile Icons
	Plan Overlay Config				
	Plan Overlay Headline	Configuration	Text Area	Mandatory Max Char. 50	Alphanumeric
	Network Options	Configuration	Path Field	Optional	Valid URL
	Enable Dental Overlay	Configuration	Checkbox	Mandatory	True/False
	Dental Overlay Link Text	Configuration	Text Field	Optional	Alphanumeric
	Find Dentist Submission Overlay Headline				
	Find Dentist Submission Overlay Headline	Configuration	Text Area	Mandatory Max Char. 50	Alphanumeric
	Select Results URL	Configuration	Dropdown	Mandatory	MetLocator (Legacy Redirect)/ Metlocator (Iframe)
	Search Field Placeholder	Configuration	Text Field	Optional	Alphanumeric
	Error Message Text	Configuration	Text Field	Optional	Alphanumeric
	Submit Button Text	Configuration	Text Field	Optional Max Char. 25	Alphanumeric
	Dental Overlay Config				
	Title	Configuration	RTE	Optional	Alpha numeric
	Subtitle	Configuration	RTE	Optional	Alpha Numeric
	Content Overlay	Configuration	Multifield Panel	Optional	
	Description	Configuration	RTE	Mandatory	Alpha Numeric
	Bullets	Configuration	Multifield	Optional	Text
	Overlay SVG Close Text	Configuration	Text Field	Optional	Text

## 2.3 Intended Audience

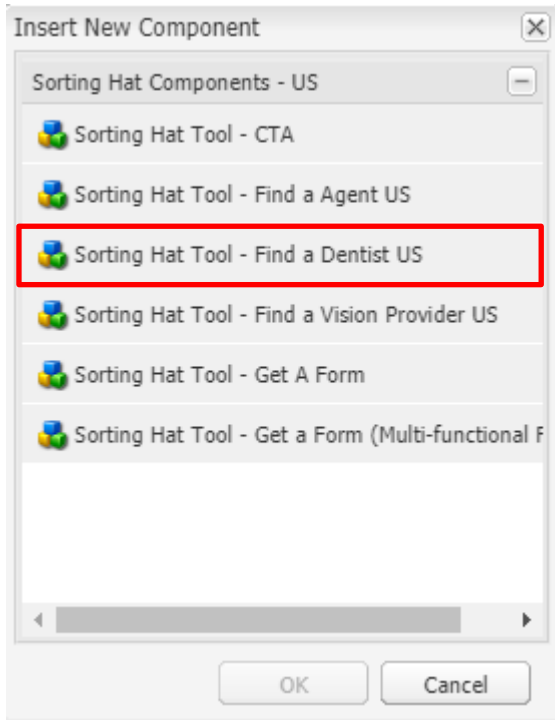
The primary audience of this design is:

- Content Authors
- Agencies
- Marketers

### 3 How to Enable/Turn-On the Component

This component/feature is available in the sidekick and can be dragged onto only the parsys configured in the Sorting Hat container Component

- From Sidekick, select market specific sorting hat component group then “Sorting Hat Tool – Find a Dentist US”



## 4 Component Dialog

Right click and press edit or double click the component to open the dialog.

### Configuration Tab

This tab contains the overall component configurations

1. Title – Text that shows up on the tile in the sorting hat container
2. Icon – Icon that shows up on the tile in the sorting hat container
3. Plan Overlay Headline – Text on the left side of the sorting hat container changes to this when the plan overlay section is shown
4. Network Options – a list in the miscadmin that contains the US Office details
5. Enable Dental Overlay – Toggle to enable the Dental Overlay
6. Dental Overlay Link Text – Text for the link that opens dental overlay
7. Find Dentist Submission Overlay Headline – Text on the left side of the sorting hat container changes to this when the submission overlay section is shown
8. Select Results URL – dropdown to choose the redirect configuration
9. Search Field Placeholder – text for placeholder of input field for user's zip code
10. Error Message Text – Text that shows is user enters invalid zip/city/state
11. Submit Button Text – Text for the submit button.
12. Title- title for the dental overlay
13. Subtitle – subtitle for the dental overlay
14. Content Overlay – Multifield Panel that allows you to add a content section
15. Description – informative text about what this section is about
16. Bullets – allows you to add multiple bullet points for the section
17. Overlay SVG Close Text – ADA requirement that tells screen readers what this SVG does.

Find a Dentist US

Configuration

Sorting Hat Menu Item - Config

Title\*

Icon\*

Please choose an icon from the dropdown

Plan Overlay Config

Plan Overlay Headline\*

Network Options

Enable Dental Overlay

Dental Overlay Link Text

Find Dentist Submission Overlay Config

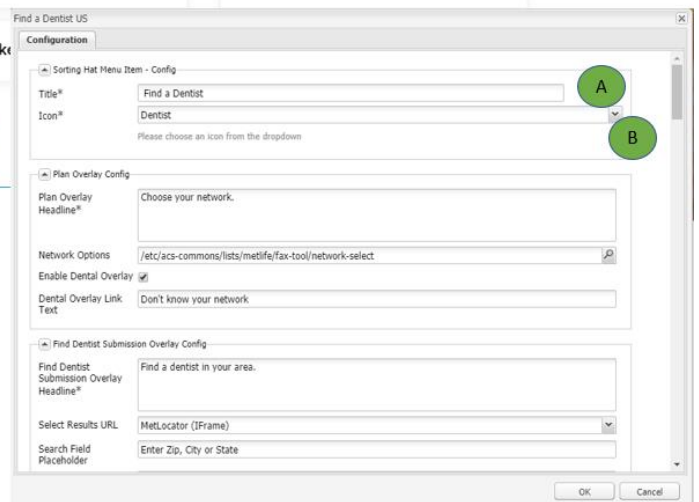
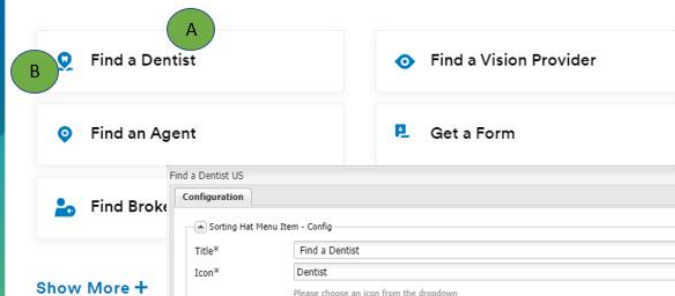
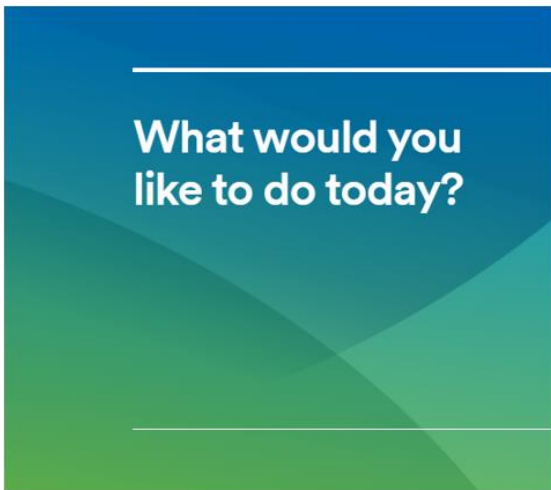
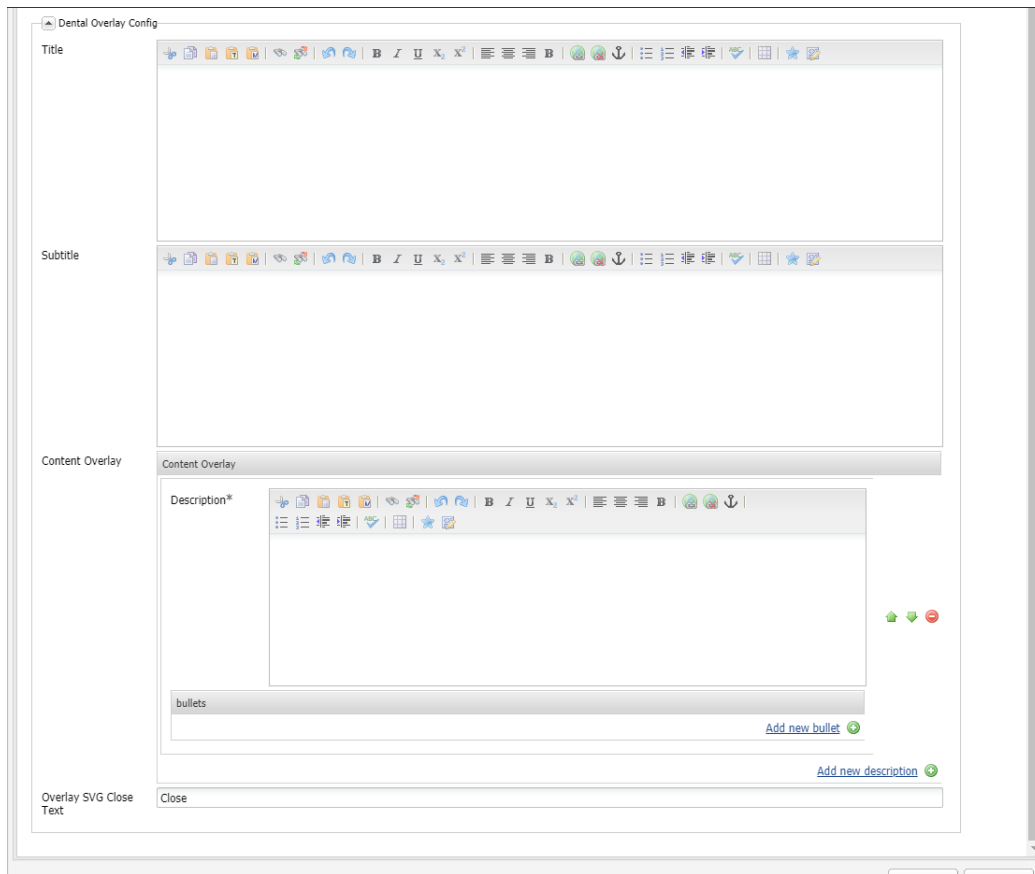
Find Dentist Submission Overlay Headline\*

Select Results URL MetLocator (IFrame)

Search Field Placeholder

Error Message Text

Submit Button Text





Choose your network.

C

PDP

PDP Plus

Dental HMO/Managed Care

Federal Dental (FEDVIP)

D

Don't know your network

E

Find a dentist in your area.

F

G

Enter Zip, City or State

H

Enter Zip, City or State

I

FIND A DENTIST

# J Dental Insurance Networks

K The descriptions below may help you identify your dental network.

## L PDP

M • A preferred dental program covers any licensed dentist/specialist, but if you choose a provider, costs are typically lower.

### PDP Plus

• This preferred dental program is the same as PDP, but with a larger group of in-network dentists/specialists to choose from.

### Dental HMO/Managed Care

• A Dental Health Maintenance Organization (HMO) or Managed Care, covers in-network only, and you must choose a primary care dentist for all services. Available in CA, FL, N

### Federal Dental (FEDVIP)

• This preferred dental program is also the same as PDP, but only available to certain F

